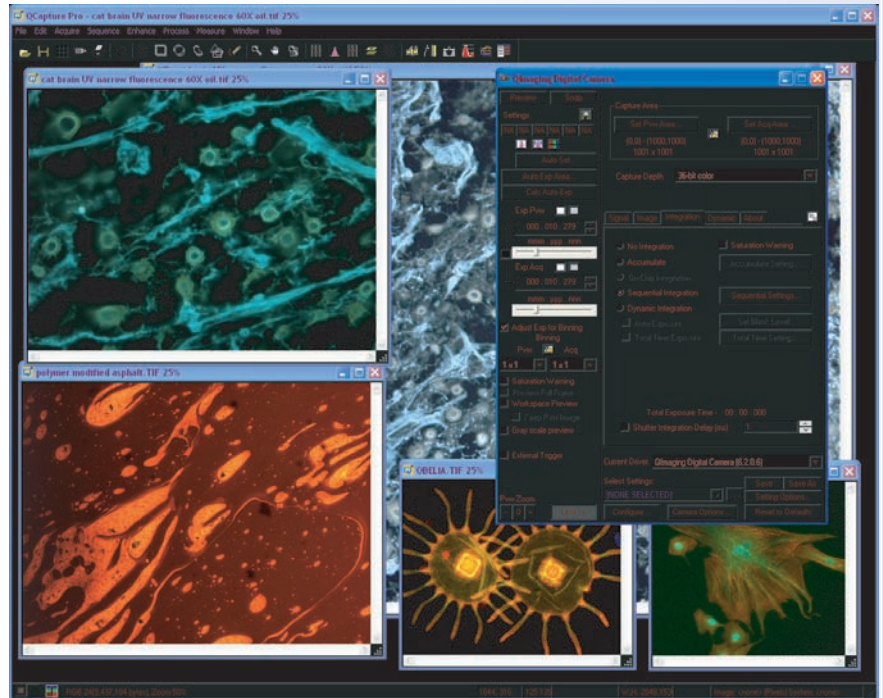


QCapture Pro™ 6 Software

QCapture Pro 6 is more powerful than ever before. See the difference!

QCapture Pro delivers advanced color imaging, profiling, and analysis capabilities for your QImaging camera. While this software sets the industry standard for simple image acquisition, enhancement, and analysis, it also supports a powerful suite of more advanced routines. QCapture Pro 6 provides computer control of all QImaging camera functions for preview, capture, and save, as well as for functions such as binning, region of interest, and live histogram optimization of dynamic range. Color profiling delivers superior color imaging via an easy-to-use button that turns the profile on or off. Advanced color correction algorithms ensure that color imaging is accurate and true. Additional features include image merging for color fluorescence imaging, dyeing, lens selection, calibration, and measurements.

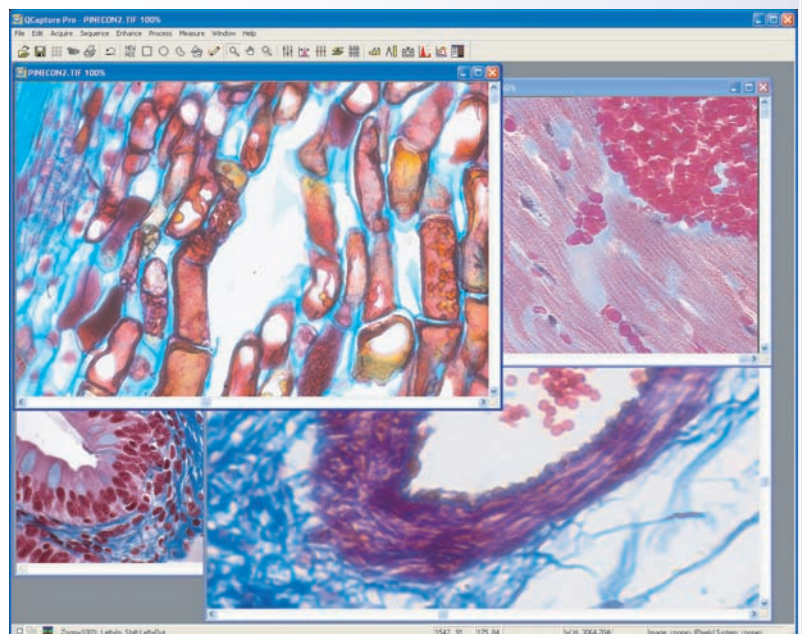


advanced color management

- Simple-to-turn-on/off color profiles
- Built-in, pre-installed ICC profiling perfectly matched to QImaging color cameras, thereby providing superior color imaging

powerful features

- Dark mode facilitates imaging in dark rooms by minimizing light from monitor
- Acquire images and sequences from any QImaging camera
- Use background subtraction for clearer images
- Perform time-lapse sequences with ease
- Annotate images
- Make linear measurements quickly and accurately
- Create organized image thumbnail collections that can be easily loaded, located, and retrieved
- Use presets to store commonly used settings
- Enhance images with built-in filters
- Perform live histograms and line profiles ...and much more!



QCapture Pro 6

Features

Real-time image preview and capture; independent control of preview and acquire provides maximum imaging flexibility

Advanced color management; built-in ICC color profiling for QImaging cameras provides superior color imaging; color correction algorithms ensure accurate, true color imaging

Background and darkfield correction

Time-lapse sequences

Auto exposure, auto white balance, auto contrast (dynamic and manual controls)

Full control over all camera features, including:

- Binning for increased sensitivity
- ROI for increased image capture speed and image cropping

RGB color filter support for QImaging monochrome cameras

External triggering

Exposure, gain, and EM gain controls

Image annotation

Calibrate images to perform linear measurements

Dye lists

Custom lens settings

Presets for storage of commonly used settings

Create and edit image sequences

Gamma correction

Live histogram

Line, circle, or free-form histogram profiles

Filters for image enhancement

Color merging for fluorescence imaging

Line profiles; surface plots

Measurement capabilities

Image processing

ordering information

QCapture Pro 6: QCAP-PRO6-S

Upgrade QCapture Pro 5.1 to QCapture Pro 6.0: QCAP-PRO6-UPGRADE

Extended warranty available

supported cameras

EXi™ Series

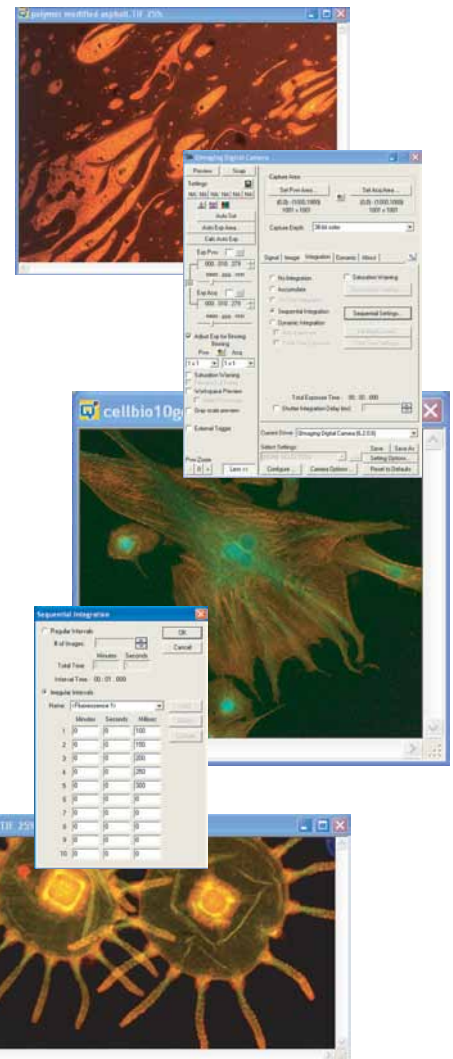
Go™ Series

MicroPublisher™ Series

Retiga™ Series

Rolera™ Series*

*except Rolera MGI+



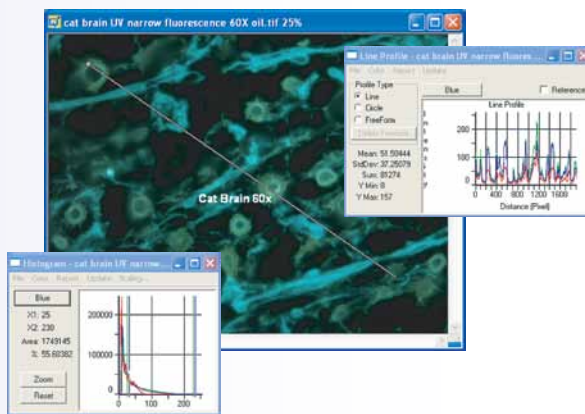
QCapture Pro requires Windows® XP (Service Pack 3 or better), Vista Business or Ultimate (Service Pack 1 or better).

EXi, Go, MicroPublisher, QCapture Pro, QImaging, Retiga, and Rolera are trademarks of QImaging Corporation. IQbase is a registered trademark of Media Cybernetics.

Windows is a registered trademark of Microsoft Corporation in the United States and other countries.

Other brand and product names are the trademarks or registered trademarks of their respective owners and manufacturers.

RoHS



Tel +1 800.874.9789 or +1 604.530.5800 ■ Fax +1 604.539.1825 ■ info@qimaging.com
www.qimaging.com