

Q-CAPTURE Pro 7™

Combines imaging power with effortless control

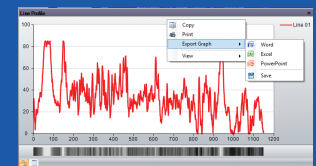
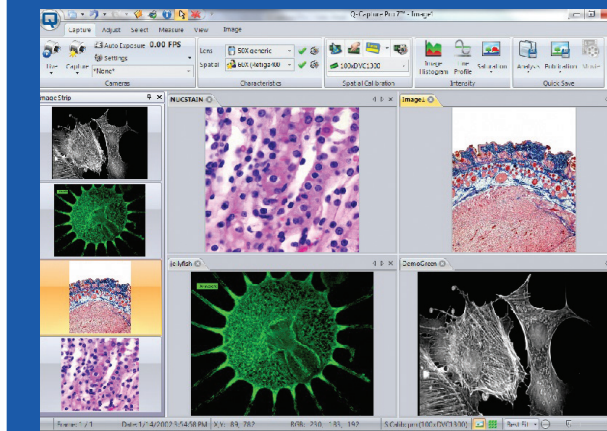
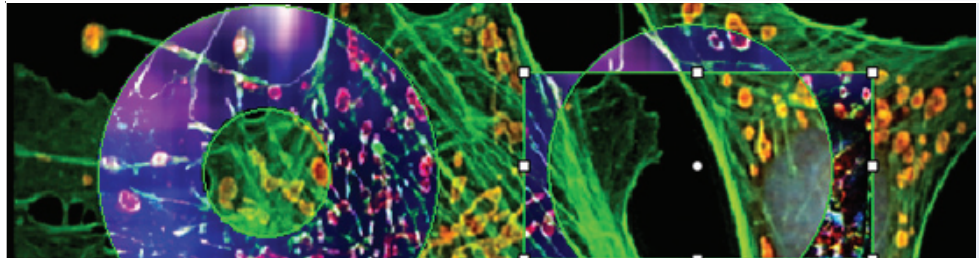
QCapture Pro 7 delivers an easy color and monochrome imaging workflow, from acquisition to file share.

While this software sets the industry standard for simple image acquisition, enhancement, and analysis, it also supports a powerful suite of more advanced routines. QCapture Pro 7 provides software control of all QImaging camera functions for preview, capture, and save, as well as for functions such as binning, region of interest, and live histogram optimization of dynamic range. Enhanced user tools include direct export of data and tables to Microsoft Excel, Word and PowerPoint. Additional features include image merging for color fluorescence imaging, dyeing, lens selection, calibration wizard, and measurements.

powerful features

- Support your camera on all modern Windows systems
- Capture for all levels of users
- Grab movies or simple time-lapse
- Run your camera how you need to run it – for speed, sensitivity, color or just high resolution capture
- Simple interface with snap and save functions
- Save with annotations and size-scale indicators
- View and save images from a side image viewer
- Customize your own workspace
- Control tints and colors for fluorescence imaging
- Maximize your image with built-in processing and enhancement tools

QCapture Pro 7™ Software



Imaging Made Easy

Image Docking, Multiple ROIs and Line Profiles Included with QCapture Pro 7

advanced controls

- Background and darkfield correction
- Time-lapse sequences
- Full control over all camera features, including:
 - Binning for increased sensitivity
 - ROI for increased image capture speed and image cropping
- RGB color filter support for QImaging monochrome cameras
- External triggering
- Exposure, gain, and EM Gain controls
- Image annotation
- Dye lists
- Custom lens settings
- Presets for storage of commonly used settings
- Create and edit image sequences
- Gamma correction
- Live histogram
- Line, circle, or free-form histogram profiles
- Filters for image enhancement
- Color merging for fluorescence imaging
- Measurement capabilities
- Image processing

workflow enhancements

- Auto exposure, auto white balance, auto contrast (dynamic and manual controls)
- Real-time image preview and capture; independent control of preview and acquisition provides maximum imaging flexibility
- Export data and tables to Microsoft Excel, Word and PowerPoint
- Easy-EM™ feature for QImaging Rolera EM-C2™ camera
- Calibration Wizard to calibrate for linear measurements
- Automatic software updates

Feature	QCapture Suite	QCapture Pro 6	QCapture Pro 7
Acquire			
Auto white balance	■	■	■
Preview multiple cameras simultaneously	■	■	■
Binning	■	■	■
Region of Interest (ROI)	■	■	■
Internal/external triggering	■	■	■
RGB filter control	■	■	■
Single frame acquisition	■	■	■
Time lapse acquisition		■	■
ROI white balance		■	■
Auto file naming		■	■
Saturation warning on live image			■
Multiple line profiles on live image			■
Advanced auto naming options			■
Advanced date/time stamp display options			■
Process			
Histogram	■	■	■
Duplicate/crop		■	■
Background subtract/correct		■	■
Color convert		■	■
Color extract & merge		■	■
Filters - edge & enhancement		■	■
Pseudo-color		■	■
Sequence difference & average		■	■
Sequence gallery		■	■
Color composite		■	■
Right click color tint - RGB & white			■
Filters - full image filter preview			■
Filters - ROI filter preview			■
Convert image to floating point color			■
Enhanced multiple ROIs			■
ROI inverse (donut ROI)			■
Enhanced annotation creation & editing			■
Background subtract/correct from points			■
View			
Live preview	■	■	■
Dark mode view		■	■
Gallery view		■	■
Lock & zoom multiple images		■	■
Local zoom		■	■
Full-screen mode		■	■
Sync pan and scroll		■	■
Create clone/duplicate of image			■
Easy mouse wheel zoom			■
Image strip view of all open images			■
Image navigator			■
Measure & Quantify			
Line profile - basic		■	■
Measure - manual tag		■	■
Measure - line		■	■
Measure - measure live images			■
Line profile - multiple lines/shapes			■
Auto calibrate from micrometer			■
Calibration marker - one click apply			■
Calibration marker - no text display option			■
Measurement data table - interactive			■
Measurement data table - export to Excel			■
Classify line and tag measurements			■
Report & Share			
Resize canvas			■
Export histogram to MS PowerPoint, Excel or Word			■
Quick save for publication			■
Quick save for analysis			■
Quick save as AVI			■
Usability			
Option of tabbed or MDI mode			■
Easily hide & open dialogs for optimal work space			■
Multiple undo/redo options			■
Preview image properties while hovering over image			■
Easy-to-move tabs to customize layout			■
One-click layout reset button			■
Customizable Quick Access Toolbar			■
Auto-update tools			■

Ordering Information

■ QCapture Pro 7

QCAP-PRO7-S

■ Upgrade QCapture Pro 6 to QCapture Pro 7

QCAP-PRO7-UPGRADE

■ Extended warranty available

Supported Cameras

■ MicroPublisher Series

■ Retiga™ Series

■ EXi™ Series

■ QICAM™/QIClick™

■ Rolera™ Series*

*Except Rolera MGi+

QCapture Pro 7 requires an IBM compatible PC, Core 2 Duo (or better), 3.0 GHz, 4GB RAM, running Windows with these operating systems:

- Windows® XP SP 3 and later (32-bit)
- Windows® Vista Business and Ultimate SP 2 and later (32 & 64-bit)
- Windows® 7 Professional and Ultimate (32 & 64-bit)



Tel 604.530.5800

Fax 604.539.1825

info@qimaging.com

www.qimaging.com

QCapture Pro is a trademark of QImaging Corporation. QImaging is a registered trademark of QImaging Corporation. Other brand and product names are the trademarks or registered trademarks of their respective owners and manufacturers.